

<b>NDDY</b>	<b>WRB_MH-10W</b>	<b>10W, WIDE INPUT, ISOLATED &amp; REGULATED SINGLE OUTPUT DC/DC CONVERTER</b>
	<b>PRODUCT SPECIFICATION</b>	

● **FEATURES**

- Size: 25.4mm\*25.4mm\*11.8mm
- International standard pin-out
- Wide input voltage range(2:1)
- Low ripple & noise
- Short circuit protection
- ROHS compliant
- Isolation voltage: 1500VDC
- Operating temperature range:-40℃~+85℃
- 3 years warranty



● **DESCRIPTION**

This is a 10W DC/DC converter specifically designed for applications where input voltage range is large and the space is limited. It is widely used in communications equipment, power system, instrumentation, industrial control, intelligent equipment, and etc.

● **PRODUCT LIST**

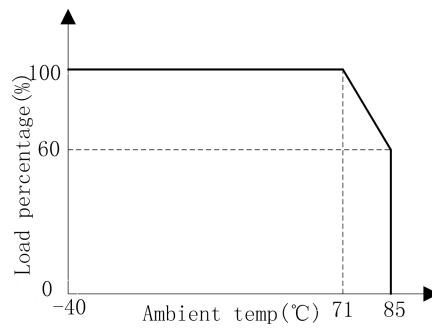
Product Name	Input Voltage / VDC		Output		EFF/% (TYP.)	Maximum CAP Load/uF
	Normal	Range	Voltage /VDC	Current/ma Max./Min.		
WRB1205MH-10W	12	9~18	5	2000	81	2200
WRB1212MH-10W			12	830	82	1000
WRB1215MH-10W			15	660	82	820
WRB1224MH-10W			24	410	83	220
WRB2405MH-10W	24	18~36	5	2000	81	2200
WRB2412MH-10W			12	830	82	1000
WRB2415MH-10W			15	660	82	820
WRB2424MH-10W			24	410	83	220
WRB4805MH-10W	48	36~72	5	2000	83	2200
WRB4812MH-10W			12	830	85	1000
WRB4815MH-10W			15	660	85	820
WRB4824MH-10W			24	410	86	220

● **PRODUCT PARAMETERS**

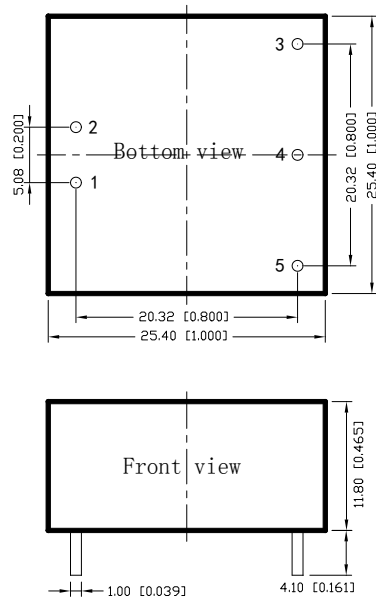
Parameter	Conditions / Description	Min	Nom	Max	Unit	
Voltage accuracy	10%~100%Io	-	±1	±3	%	
Load regulation	10%~100%Io	-	±0.5	±1	%	
Line regulation	100%Io, input votagel range	-	±0.2	±0.5	%	
Ripple & Noise	20MHz BW	5Vo	-	50	-	mVp-p
		Other output	-	100	-	
Switching	Nominal input voltage, 100%Io	-	300	-	kHz	

frequency					
SCP	Short circuit protection	Continuous, self-recovery			
Temperature coefficient	Nominal input voltage, 100%Io	-	0.02	-	%/°C
Operating temperature		-40	-	+85	°C
Storage temperature		-40	-	+125	°C
Storage humidity	No condensing	-	-	95	%RH
Cooling method		Natural air cooling			
Insulation voltage		1500	-	-	VDC
Insulation resistance	Input-output, 500VDC, 25°C, 70%RH	1000	-	-	Mohms
MTBF	MIL-HDBK-217F@25°C	100	-	-	KHours
Case material		aluminum			
Weight		-	14	-	g

● DERATING CURVE

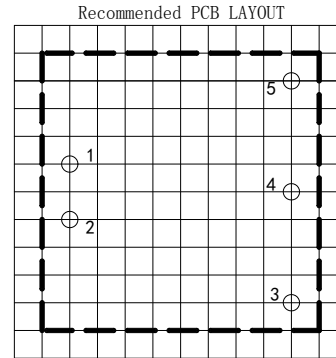


## ● DIMENSIONS AND PIN ASSIGNMENT



Unit: mm[inch]  
 Pin diameter tolerance:  $\pm 0.10[\pm 0.004]$   
 General tolerance:  $\pm 0.50[\pm 0.020]$

Pin	1	2	3	4	5
WRB	GND	V <sub>in</sub>	+V <sub>o</sub>	No Pin	0V



Note1: Grid is 2.54mm\*2.54mm  
 Note2: Hole diameter is advised 1.5mm

## ● NOTES

1. Unless otherwise specified, data in this specification is tested with nominal input voltage, rated output load, and  $T_a=25^\circ\text{C}$ , humidity<75%RH.
2. All data testing methods are based on Guangzhou NengDa company standards.
3. Specification of the product may be subject to change without prior notice.
4. All right reserved by Guangzhou NengDa Power Supply Technology Co., Ltd.