

NDDY	PA(B)_MH-60W	60W, WIDE INPUT, ISOLATED & REGULATED SINGLE OUTPUT DC/DC CONVERTER
	PRODUCT SPECIFICATION	

● **FEATURES**

- Size: 50.8mm*50.8mm*11.8mm
- International standard pin-out
- Wide input voltage range(4:1)
- Low ripple & noise
- Short circuit protection
- ROHS compliant
- Isolation voltage: 1500VDC
- Operating temperature range:-40℃~+105℃
- 3 years warranty

● **DESCRIPTION**

This is a 60W DC/DC converter specifically designed for applications where input voltage range is large and the space is limited. It is widely used in communications equipment, power system, instrumentation, industrial control, intelligent equipment, and etc.

● **PRODUCT LIST**

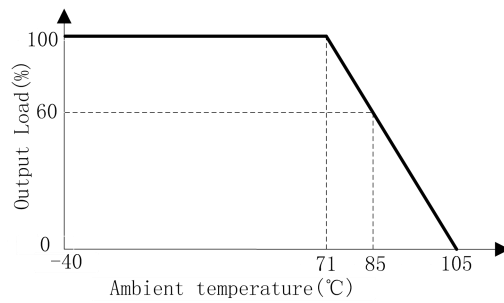
Product Name	Input Voltage / VDC		Output		EFF/% (TYP.)	Maximum CAP Load/uF
	Normal	Range	Voltage /VDC	Current/mA Max./Min.		
PA2412MH-60W	24	9~36	±12	±2500	89	3300
PA2415MH-60W			±15	±2000	89	2000
PB2412MH-60W			12	5000	90	7500
PB2415MH-60W			15	4000	90	3900
PA4812MH-60W	48	18~72	±12	±2500	89	3300
PA4815MH-60W			±15	±2000	89	2000
PB4812MH-60W			12	5000	90	7500
PB4815MH-60W			15	4000	90	3900

● **PRODUCT PARAMETERS**

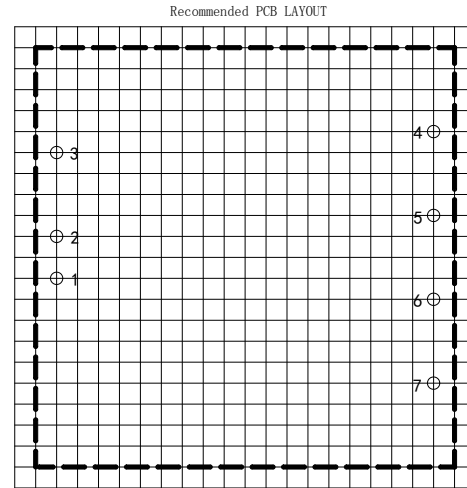
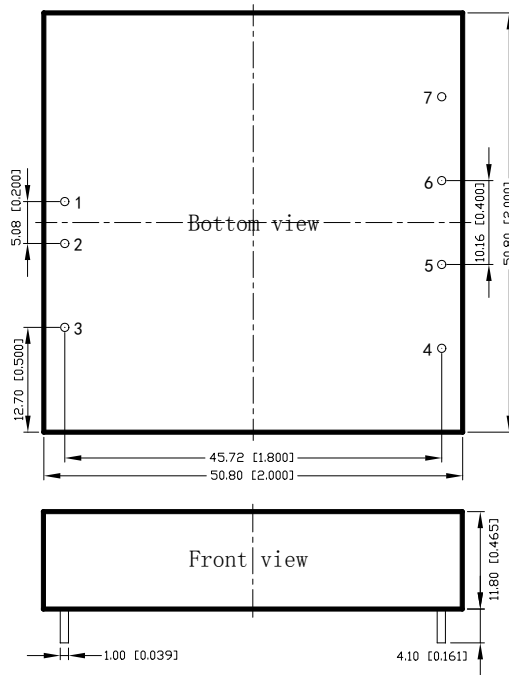
Parameter	Conditions / Description	Min	Nom	Max	Unit
Voltage accuracy	10%-100%Io	-	±1	±3	%
Load regulation	10%-100%Io	-	±0.5	±1	%
Line regulation	100%Io, input voltage range	-	±0.2	±0.5	%
Ripple & Noise	20MHz BW	-	120	-	mVp-p
Switching frequency	Nominal input voltage, 100%Io	-	300	-	kHz
SCP	Short circuit protection	Continuous, self-recovery			
Temperature coefficient	Nominal input voltage, 100%Io	-	0.03	-	%/℃
Operating		-40	-	+85	℃

temperature					
Storage temperature		-40	-	+125	°C
Storage humidity	No condensing	-	-	95	%RH
Cooling method		Natural air cooling			
Insulation voltage		1500	-	-	VDC
Insulation resistance	Input-output, 500VDC, 25°C, 70%RH	1000	-	-	MOhms
MTBF	MIL-HDBK-217F@25°C	100	-	-	KHours
Case material		aluminum			
Weight		-	50	-	g

● DERATING CURVE



● DIMENSIONS AND PIN ASSIGNMENT



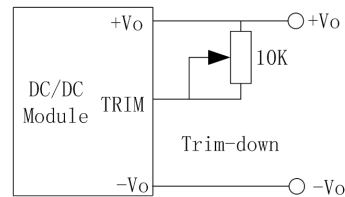
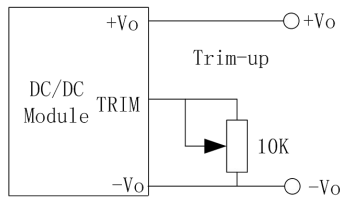
Note1: Grid is 2.54mm*2.54mm
 Note2: Hole diameter is advised 1.5mm

PIN	1	2	3	4	5	6	7
PA	Vin	GND	Ctrl	TRIM	-Vo	+Vo	NP
PB	Vin	GND	Ctrl	TRIM	-Vo	COM	+Vo

Unit: mm[inch]
 Pin diameter tolerance: $\pm 0.10[\pm 0.004]$
 General tolerance: $\pm 0.50[\pm 0.020]$

● SPECIAL PIN DESCRIPTION

1. TRIM is the output voltage trimming pin, with trimming range of $\pm 10\%$.



2. Positive Logic Control on/off.

Item	Description
Logic Compatibility	CMOS or Open Collector TTL
Module ON	$> +3.5$ to $V_{in,max}$ VDC, or Open Circuit
Module OFF	< 1.2 VDC

● NOTES

1. Unless otherwise specified, data in this specification is tested with nominal input voltage, rated output load, and $T_a=25^\circ\text{C}$, humidity $<75\%$ RH.
2. All data testing methods are based on Guangzhou NengDa company standards.
3. Specification of the product may be subject to change without prior notice.
4. All right reserved by Guangzhou NengDa Power Supply Technology Co., Ltd.