

<b>NDDY</b>	<b>WRB_MD-15W</b>	<b>15W, WIDE INPUT, ISOLATED &amp; REGULATED SINGLE OUTPUT DC/DC CONVERTER</b>
	<b>PRODUCT SPECIFICATION</b>	

● **FEATURES**

- Size: 50.8mm\*25.4mm\*11.8mm
- International standard pin-out
- Wide input voltage range(2:1)
- Low ripple & noise
- Short circuit protection
- ROHS compliant
- Isolation voltage: 1500VDC
- Operating temperature range:-40℃~+85℃
- 3 years warranty



● **DESCRIPTION**

This is a 15W DC/DC converter specifically designed for applications where input voltage range is large and the space is limited. It is widely used in communications equipment, power system, instrumentation, industrial control, intelligent equipment, and etc.

● **PRODUCT LIST**

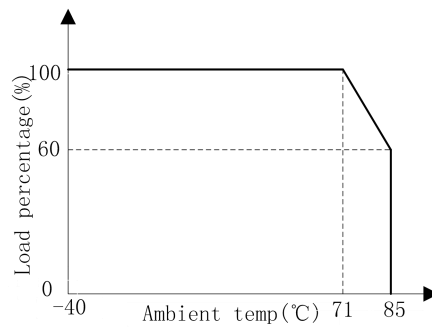
Product Name	Input Voltage / VDC		Output		EFF/% (TYP.)	Maximum CAP Load/uF
	Normal	Range	Voltage /VDC	Current/mA Max./Min.		
WRB1205MD-15W	12	9~18	5	3000	81	3000
WRB1209MD-15W			9	1600	82	3000
WRB1212MD-15W			12	1250	82	1500
WRB1215MD-15W			15	1000	83	1200
WRB2405MD-15W	24	18~36	5	3000	82	3000
WRB2409MD-15W			9	1600	82	3000
WRB2412MD-15W			12	1250	83	1500
WRB2415MD-15W			15	1000	83	1200
WRB2424MD-15W			24	1000	83	1200
WRB4805MD-15W	48	36~72	5	3000	83	3000
WRB4812MD-15W			12	1250	85	1500
WRB4824MD-15W			24	410	85	1200

● **PRODUCT PARAMETERS**

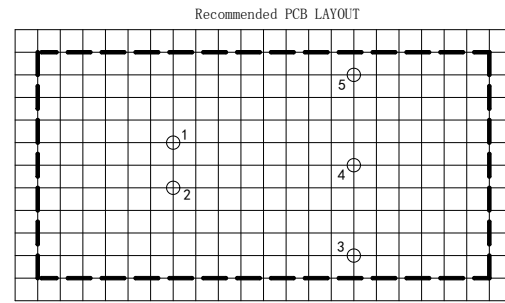
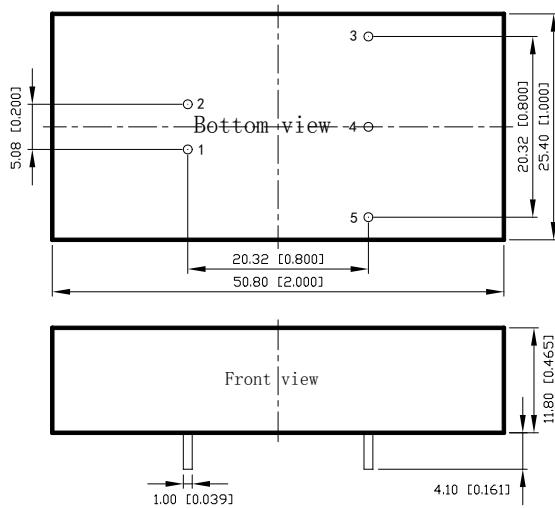
Parameter	Conditions / Description	Min	Nom	Max	Unit	
Voltage accuracy	10%~100%Io	-	±1	±3	%	
Load regulation	10%~100%Io	-	±0.5	±1	%	
Line regulation	100%Io, input votagel range	-	±0.2	±0.5	%	
Ripple & Noise	20MHz BW	5Vo	-	50	-	mVp-p
		Other output	-	100	-	
Switching	Nominal input voltage, 100%Io	-	300	-	kHz	

frequency					
SCP	Short circuit protection	Continuous, self-recovery			
Temperature coefficient	Nominal input voltage, 100%Io	-	0.02	-	%/°C
Operating temperature		-40	-	+85	°C
Storage temperature		-40	-	+125	°C
Storage humidity	No condensing	-	-	95	%RH
Cooling method		Natural air cooling			
Insulation voltage		1500	-	-	VDC
Insulation resistance	Input-output, 500VDC, 25°C, 70%RH	1000	-	-	Mohms
MTBF	MIL-HDBK-217F@25°C	100	-	-	KHours
Case material		aluminum			
Weight		-	25	-	g

● DERATING CURVE



## ● DIMENSIONS AND PIN ASSIGNMENT



Note1: Grid is 2.54mm\*2.54mm  
Note2: Hole diameter is advised 1.5mm

Pin	1	2	3	4	5
WRB	GND	Vin	+Vo	No Pin	0V

Unit: mm[inch]  
Pin diameter tolerance:  $\pm 0.10[\pm 0.004]$   
General tolerance:  $\pm 0.50[\pm 0.020]$

## ● NOTES

1. Unless otherwise specified, data in this specification is tested with nominal input voltage, rated output load, and  $T_a=25^\circ\text{C}$ , humidity<75%RH.
2. All data testing methods are based on Guangzhou NengDa company standards.
3. Specification of the product may be subject to change without prior notice.
4. All right reserved by Guangzhou NengDa Power Supply Technology Co., Ltd.