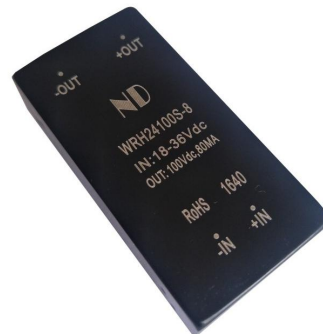


NDDY	WRH_S(D)-8	4-8W, WIDE INPUT, ISOLATED & REGULATED DUAL(SINGLE) OUTPUT DC/DC CONVERTER
	PRODUCT SPECIFICATION	

● **FEATURES**

- Size: 50.8mm*25.4mm*13.0mm
- International standard pin-out
- Wide input voltage range
- High voltage output
- Low ripple & noise
- ROHS compliant
- Isolation voltage: 1500VDC
- Operating temperature range: -40℃ ~ +85℃
- 3 years warranty



● **DESCRIPTION**

This is a DC/DC converter specifically designed for applications where input voltage is low and output voltage is high. It is widely used in communications equipment, power system, instrumentation, industrial control, intelligent equipment, and etc.

● **PRODUCT LIST**

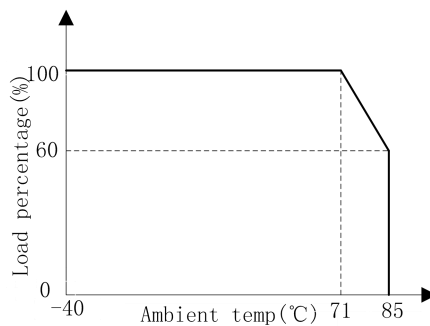
Product Name	Input Voltage / VDC		Output		EFF/% (TYP.)	Maximum CAP Load/uF
	Normal	Range	Voltage /VDC	Current/mA Max. /Min.		
WRH1250S-8	12	10~18	50	160	78	100
WRH12100S-8			100	80	76	100
WRH12200S-8			200	40	75	68
WRH12300S-6			300	20	74	47
WRH12400S-4			400	10	73	33
WRH12500S-4			500	8	72	22
WRH12600S-4			600	6.7	70	10
WRH12700S-3			700	4.3	68	4.7
WRH24100S-8	24	18~36	100	80	78	100
WRH24200S-8			200	40	77	68
WRH24300S-6			300	20	75	47
WRH24400S-4			400	10	74	33
WRH24500S-4			500	8	73	22
WRH24600S-4			600	6.7	71	10
WRH24700S-3			700	4.3	70	4.7
WRH1250D-8	12	10~18	±50	±80	76	68
WRH12100D-8			±100	±40	75	68
WRH12150D-6			±150	±20	74	47
WRH12200D-4			±200	±10	73	33
WRH12250D-4			±250	±8.0	72	22
WRH12300D-4			±300	±6.6	70	10
WRH2450D-8			24	18~36	±50	±80

WRH24100D-8			±100	±40	77	68
WRH24150D-6			±150	±20	75	47
WRH24200D-4			±200	±10	74	33
WRH24250D-4			±250	±8.0	73	22
WRH24300D-4			±300	±6.6	71	10

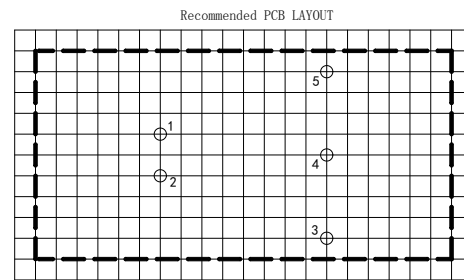
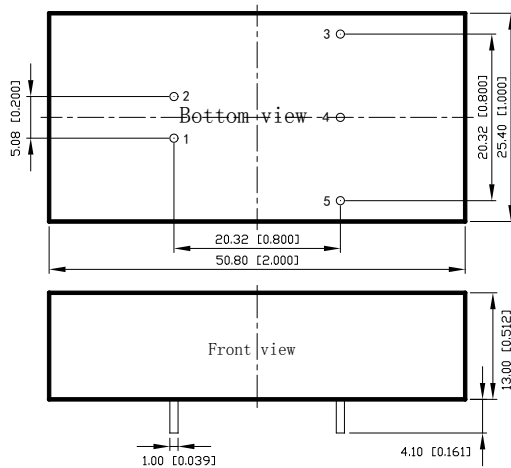
● PRODUCT PARAMETERS

Parameter	Conditions / Description	Min	Nom	Max	Unit
Voltage accuracy	10%-100%Io	-	±2	±5	%
Load regulation	10%-100%Io	-	±0.5	±1	%
Line regulation	100%Io, input votagel range	-	±0.2	±0.5	%
Ripple & Noise	20MHz BW	-	±1	-	%Vo
Switching frequency	Nominal input voltage, 100%Io	-	125	-	kHz
Temperature coefficient	Nominal input voltage, 100%Io	-	0.02	-	%/°C
Operating temperature		-40	-	+85	°C
Storage temperature		-40	-	+125	°C
Storage humidity	No condensing	-	-	95	%RH
Cooling method		Natural air cooling			
Insulation voltage		1500	-	-	VDC
Insulation resistance	Input-output, 500VDC, 25°C, 70%RH	1000	-	-	MOhms
MTBF	MIL-HDBK-217F@25°C	100	-	-	KHours
Case material		aluminum			
Weight		-	25	-	g

● DERATING CURVE



● DIMENSIONS AND PIN ASSIGNMENT



Note1: Grid is 2.54mm*2.54mm
 Note2: Hole diameter is advised 1.5mm

Pin	1	2	3	4	5
XXS_X	GND	Vin	+Vo	No Pin	0V
XXD_X	GND	Vin	+Vo	0V	-Vo

Unit: mm[inch]
 Pin diameter tolerance: $\pm 0.10[\pm 0.004]$
 General tolerance: $\pm 0.50[\pm 0.020]$

● NOTES

1. Unless otherwise specified, data in this specification is tested with nominal input voltage, rated output load, and $T_a=25^\circ\text{C}$, humidity<75%RH.
2. All data testing methods are based on Guangzhou NengDa company standards.
3. Specification of the product may be subject to change without prior notice.
4. All right reserved by Guangzhou NengDa Power Supply Technology Co., Ltd.