

<b>NDDY</b>	<b>PWA (B) _MD-30W</b>	<b>30W, WIDE INPUT, ISOLATED &amp; REGULATED DUAL(SINGLE) OUTPUT DC/DC CONVERTER</b>
	<b>PRODUCT SPECIFICATION</b>	

● **FEATURES**

- Size: 50.8mm\*25.4mm\*11.8mm
- International standard pin-out
- Wide input voltage range(4:1)
- Low ripple & noise
- Short circuit protection
- ROHS compliant
- Isolation voltage: 1500VDC
- Operating temperature range:-40℃~+105℃
- 3 years warranty



● **DESCRIPTION**

This is a 30W DC/DC converter specifically designed for applications where input voltage range is large and the space is limited. It is widely used in communications equipment, power system, instrumentation, industrial control, intelligent equipment, and etc.

● **PRODUCT LIST**

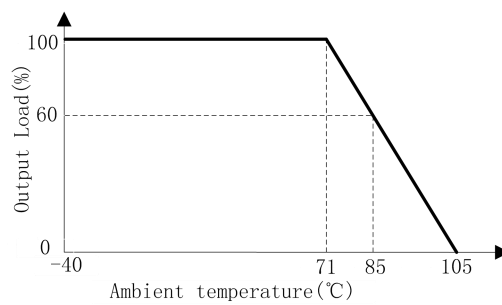
Product Name	Input Voltage / VDC		Output		EFF/% (TYP.)	Maximum CAP Load/uF
	Normal	Range	Voltage /VDC	Current/mA Max./Min.		
PWA2412MD-30W	24	9~36	±12	±1250	88	1250
PWA2415MD-30W			±15	±1000	88	1000
PWB2403MD-25W			3.3	7500	88	7500
PWB2405MD-30W			5	6000	90	6000
PWB2412MD-30W			12	2500	89	2500
PWB2415MD-30W			15	2000	89	2000
PWA4812MD-30W			48	18~72	±12	±1250
PWA4815MD-30W	±15	±1000			88	1000
PWB4803MD-25W	3.3	7500			88	7500
PWB4805MD-30W	5	6000			90	6000
PWB4812MD-30W	12	2500			89	2500
PWB4815MD-30W	15	2000			89	2000

● **PRODUCT PARAMETERS**

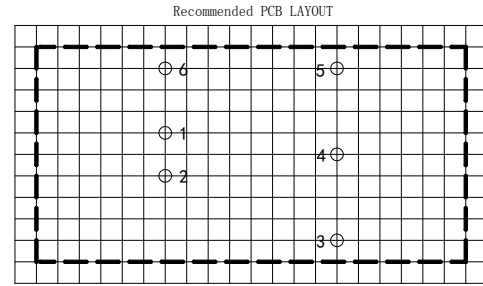
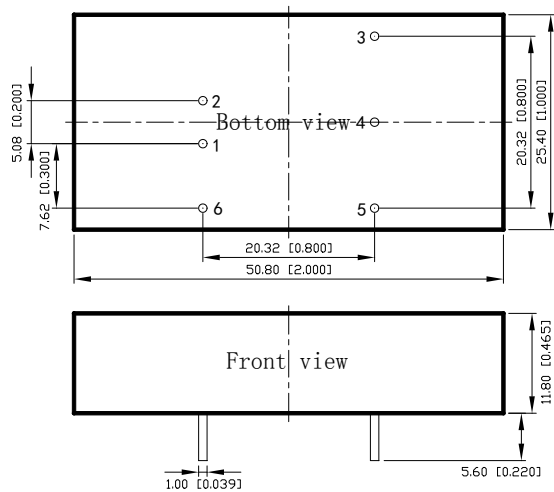
Parameter	Conditions / Description	Min	Nom	Max	Unit
Voltage accuracy	10%-100%Io	-	±1	±3	%
Load regulation	10%-100%Io	-	±0.5	±1.0	%
Line regulation	100%Io, input votagel range	-	±0.2	±0.5	%
Ripple & Noise	20MHz BW	-	100	-	mVp-p
Switching frequency	Nominal input voltage, 100%Io	-	300	-	kHz

SCP	Short circuit protection	Continuous, self-recovery			
Temperature coefficient	Nominal input voltage, 100%Io	-	0.02	-	%/°C
Operating temperature		-40	-	+105	°C
Storage temperature		-40	-	+125	°C
Storage humidity	No condensing	-	-	95	%RH
Cooling method		Natural air cooling			
Insulation voltage		1500	-	-	VDC
Insulation resistance	Input-output, 500VDC, 25°C, 70%RH	1000	-	-	Mohms
MTBF	MIL-HDBK-217F@25°C	100	-	-	KHours
Case material		aluminum			
Weight		-	25	-	g

● DERATING CURVE



## ● DIMENSIONS AND PIN ASSIGNMENT



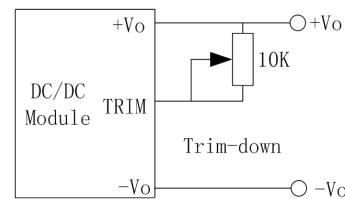
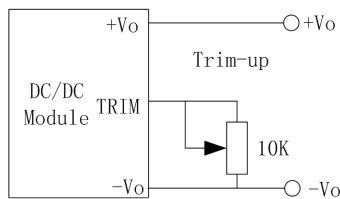
Note1: Grid is 2.54mm\*2.54mm  
Note2: Hole diameter is advised 1.5mm

PIN	1	2	3	4	5	6
PWB	GND	Vin	+Vo	TRIM	-Vo	REM
PWA	GND	Vin	+Vo	COM	-Vo	REM

Unit: mm[inch]  
Pin diameter tolerance:  $\pm 0.10[\pm 0.004]$   
General tolerance:  $\pm 0.50[\pm 0.020]$

## ● SPECIAL PIN DESCRIPTION

1. TRIM is the output voltage trimming pin(single output), with trimming range of  $\pm 10\%$ .



2. Positive Logic Remote on/off Control

Item	Description
Logic Compatibility	CMOS or Open Collector TTL
Module ON	$> +3.5$ to $V_{in,max}$ VDC, or Open Circuit
Module OFF	$< 1.2$ VDC

## ● NOTES

1. Unless otherwise specified, data in this specification is tested with nominal input voltage, rated output load, and  $T_a=25^\circ\text{C}$ , humidity $<75\%$ RH.
2. All data testing methods are based on Guangzhou NengDa company standards.
3. Specification of the product may be subject to change without prior notice.
4. All right reserved by Guangzhou NengDa Power Supply Technology Co., Ltd.